

Luxury & Modern Japanese Pattern 2018



BISHAMON

About

BISHAMON

Our brand is inspired by the Bishamon Hexagonal Pattern (Tortoise-Shell grid), which is a true authentic Japanese pattern.

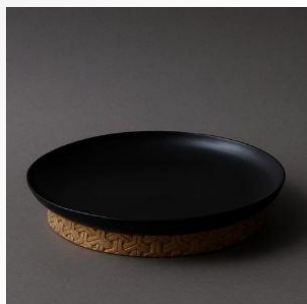
Bishamon is one of the authentic Japanese patterns to be able to use in traditional and modern spaces. For daily professional business use.

Our products are hand made by its original craftsman from ARITA Japan. We welcome you in our Netherlands European showroom.

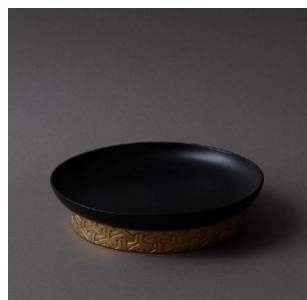
With our kind regards
Ozaki Tableware



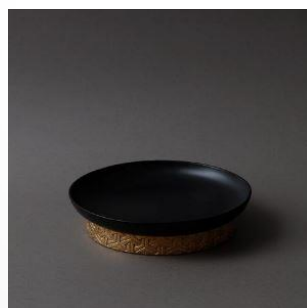
Dishes Black



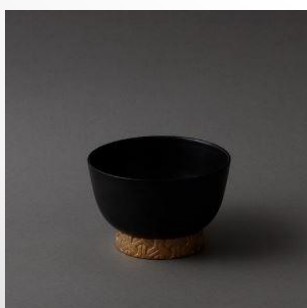
No BI 01-18
Plate L
Size 5,08 cm h x 27,95 Ø
Color Gold & Black
Material Porcelain
Weight 1,18 kg



No BI 02-18
Plate M
Size 5,08 cm h x 23,95 Ø
Color Gold & Black
Material Porcelain
Weight 0,85 kg



No BI 03-18
Plate S
Size 5,08 cm h x 15,24 Ø
Color Gold & Black
Material Porcelain
Weight 0,60 kg



No BI 04-18
Bowl
Size 10,16 cm h x 5,08 Ø
Color Gold & Black
Material Porcelain
Weight 0,53 kg



Dishes White



No BI 05-18
Plate L
Size 5,08 cm h x 27,95 Ø
Color Silver & White
Material Porcelain
Weight 1,18 kg



No BI 06-18
Plate M
Size 5,08 cm h x 23,95 Ø
Color Silver & White
Material Porcelain
Weight 0,85 kg



No BI 07-18
Plate S
Size 5,08 cm h x 15,24 Ø
Color Silver & White
Material Porcelain
Weight 0,60 kg



No BI 08-18
Bowl
Size 10,16 cm h x 5,08 Ø
Color Silver & White
Material Porcelain
Weight 0,53 kg



Canister White



No BI 09-18
Canister S
Size 9,9 cm h x 9,9 Ø cm
Color Silver & White
Material Porcelain
Weight 0,55 kg



No BI 10-18
Plate M
Size 16 cm h x 9,9 Ø cm
Color Silver & White
Material Porcelain
Weight 0,70 kg



No BI 11-18
Plate L
Size 34 cm h x 9,9 Ø cm
Color Silver & White
Material Porcelain
Weight 1,24 kg



Canister Silver



No BI 12-18
Canister S
Size 9,9 cm h x 9,9 Ø cm
Color Outer Silver & Inner gold
Material Porcelain
Weight 0,55 kg



No BI 13-18
Plate M
Size 16 cm h x 9,9 Ø cm
Color Outer Silver & Inner gold
Material Porcelain
Weight 0,70 kg



No BI 14-18
Plate L
Size 34 cm h x 9,9 Ø cm
Color Outer Silver & Inner gold
Material Porcelain
Weight 1,24 kg



Canister Red Rust



No BI 09-18
Canister S
Size 9,9 cm h x 9,9 Ø cm
Color Outer Red Rust & Inner gold
Material Porcelain
Weight 0,55 kg



No BI 10-18
Plate M
Size 16 cm h x 9,9 Ø cm
Color Outer Red Rust & Inner gold
Material Porcelain
Weight 0,70 kg



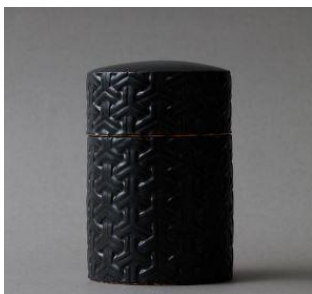
No BI 11-18
Plate L
Size 34 cm h x 9,9 Ø cm
Color Outer Red Rust & Inner gold
Material Porcelain
Weight 1,24 kg



Canister Black



No BI 09-18
Canister S
Size 9,9 cm h x 9,9 Ø cm
Color Outer black & Inner gold
Material Porcelain
Weight 0,55 kg



No BI 10-18
Plate M
Size 16 cm h x 9,9 Ø cm
Color Outer black & Inner gold
Material Porcelain
Weight 0,70 kg



No BI 11-18
Plate L
Size 34 cm h x 9,9 Ø cm
Color Outer black & Inner gold
Material Porcelain
Weight 1,24 kg



Minimum Order

The Minimum order is 2 pieces per one item. The order amount must be more than EU € 1,000 in total.

How to Order

- Step 1: Send an inquiry e-mail to the address info@ozaki-tableware.com with item No., item name, and quantity you require.
- Step 2: You will be informed of the delivery schedule by return e-mail.
- Step 3: When the merchandise is ready, the invoice will be sent.
- Step 4: After receipt of payment, the merchandise will be shipped by courier service.
- In case of " out of stock":
You will be informed of delivery dates by return e-mail. When ready, the invoice will be sent to you.
Upon receipt of payment, the merchandise will be shipped.

Freight

The freight is by UPS or FEDEX based on DDP (as per 2010 Incoterms). It means that the freight and duty tax is included in the price for International shipment, in Europe we use Post NL agency.
In case you import the goods for the first time, you may be requested to have an import license by the local government.
Please prepare in advance. In doing so, the declaration of the goods upon arrival into the USA will be very smooth.

Delivery & Shipping:

Though your shipment will likely go out sooner, please allow up to 2-3 weeks for your order to ship.

The merchandise may take 2-3 weeks to arrive at your location after the payment.

Changes to Your Order:

Please contact info@ozaki-tableware.com within 48 hours to make any changes needed.

Payment

After receiving your invoice , you are able to settle on line by our payment link, or do a TT bank transfer to our bank account. IBAN CODE NL96 RABO 0323 1778 83

Nature of Handmade Products:

All of our products are handmade. Due to the nature of our production method, each product may vary slightly.

Damages / Defects:

Please open the delivered parcel upon arrival and inspect the merchandise. In case of any damage or defect, please e-mail us at contact@hizen-porcelain.com within 7 days, so that the replacement can be shipped.

If possible, please provide pictures of the damage or defected product.

Returns / Exchanges:

Wholesale merchandise may not be returned or exchanged. We only accept returns in the case of defective merchandise, as noted above.

Validity:

Valid until August 31, 2018



Company European Head office

1/ Ozaki Tableware B.V.
Hospitaallaan 1 K1.06
9341AE VEENHUIZEN
THE NETHERLANDS

OPEN Hours 08:30 – 17:30H Mon – Fri / Sat till 16:00
Showroom Visit on appointment
EMAIL info@ozaki-tableware.com
PHONE +31 (0)5 92 248 164

2/ No OFFICIAL
№ EORI NL857915551

3/ T.T BANK DATA
NAME BANK Rabobank
NAME ACCOUNT Ozaki Tableware B.V.
CURRENCY EURO €
IBAN CODE NL96 RABO 0323 1778 83
Swift / BIC RABONL2U

4/ PERSONAL CONTACT
TELEPHONE +31 (0)5 92 248 164

Personal note:

